

The Center on Philanthropy & Public Policy

CALIFORNIA FOUNDATIONS

2000-2001 Update

James M. Ferris

**Research Paper - 19
December 2003**

CALIFORNIA FOUNDATIONS

2000-2001 Update

James M. Ferris

**Research Paper - 19
December 2003**

James M. Ferris: Professor and Director, The Center on Philanthropy and Public Policy; School of Policy, Planning, and Development, University of Southern California, Lewis Hall 210; Los Angeles, CA 90089-0626

ABOUT THE CENTER ON PHILANTHROPY AND PUBLIC POLICY

The Center on Philanthropy and Public Policy promotes more effective philanthropy and strengthens the nonprofit sector through research that informs philanthropic decision making and public policy to advance public problem solving. Using California and the West as a laboratory, the Center conducts research on philanthropy, volunteerism, and the role of the nonprofit sector in America's communities.

In order to make the research a catalyst for understanding and action, the Center encourages communication among the philanthropic, nonprofit, and policy communities. This is accomplished through a series of convenings and conversations around research findings and policy issues to help key decision makers work together more effectively to solve public problems and to identify strategies for action.

The opinions presented in this paper represent those of the authors and not those of The Center on Philanthropy and Public Policy

Copyright © 2003 by The Center on Philanthropy and Public Policy

The Center on Philanthropy and Public Policy
School of Policy, Planning, and Development
University of Southern California
Lewis Hall, Room 210
Los Angeles, California 90089-0626

All rights reserved

Printed in the United States of America

ABOUT THE AUTHOR

James M. Ferris holds the Emery Evans Olson Chair in Nonprofit Entrepreneurship and Public Policy in the School of Policy, Planning, and Development at the University of Southern California. He directs The Center on Philanthropy and Public Policy. Professor Ferris specializes in the economics of the public and nonprofit sectors, public finance, and public policy. His research examines the shifting roles of the public, nonprofit and for-profit sectors in governance and the economy. He has done extensive work on public service delivery, focusing on the contracting decisions of local governments and strategies to improve public sector performance through competition, decentralization, and privatization. He is currently investigating the causes and consequences of the conversion of healthcare organizations from nonprofit to for-profit status and the implications for the nonprofit role in healthcare; the changing landscape of philanthropy; and intersectoral alliances for urban problem solving.

PREFACE

This report briefly updates the information from the baseline analysis of California foundations undertaken by The Center on Philanthropy and Public Policy in cooperation with The Foundation Center. This report provides an update for 2000 and 2001.

The baseline analysis was conducted with data through 1999, and focused on trends during the 1990s. The results of this analysis are reported in the Foundation Center's monograph: *California Foundations*, and various reports issued by the Center, best summarized in *California Foundations: Trends and Patterns*. Foundation fortunes have dimmed somewhat since then. Although contrary to public perception, the gains of the 1990s have not been reversed, as revealed in this update.

It is important not to over-interpret annual fluctuations. Given the high concentration of assets and giving among a relatively small number of foundations, we know that changing circumstances or a single decision about grantmaking can move the numbers in dramatic ways. Indeed, there are several examples in this analysis. Nevertheless, it is important to track annual changes so as to detect emerging trends. Changes that are sustained over multiple years may be a harbinger of the future. Thus, the Center intends to continue tracking changes among California foundations in the years ahead.

James M. Ferris

Director

The Center on Philanthropy and Public Policy

CALIFORNIA FOUNDATIONS: AN UPDATE

The Size and Growth of California Foundations¹

After a period of significant growth in the assets and giving of California foundations in the 1990s, the growth rate for assets and giving slowed dramatically at the turn of the decade. However, foundation assets and giving levels remain far greater than they were at the beginning of the 1990s.

- Between 1999 and 2000, growth of total foundation assets in California slowed to 2.7 percent, as compared to an average annual growth rate of 31.1 percent between 1991 and 1999. And, between 2000 and 2001, total foundation assets in California decreased by 5.7 percent.
- The rates of total foundation giving also fell quite dramatically at the end of the 1990s. While total foundation giving increased on average 28 percent per year from 1991 to 1999, the growth rate slowed to 18.5 percent from 1999 to 2000, and to 3.9 percent from 2000 to 2001.
- Even with recent declines in foundation assets and giving in California, total dollar amounts for both assets and giving are still far greater than they were in the early 1990s: total assets held by all California foundations were \$66 billion in 2001 as opposed to \$20 billion in 1991 and total giving was \$3 billion in 2001 as compared to \$900 million in 1991.

While growth in assets and giving for California foundations exceeded the growth rate of national foundations in the 1990s, California experienced a more dramatic slowdown in growth than national foundations in 2000 and 2001.

- Total assets for California foundations increased 2.7 percent from 1999 to 2000, while the national growth rate of total assets was 8.4 percent. As in California, foundations across the U.S. saw total assets decrease between 2000 and 2001. However, while the total assets of California foundations decreased by 5.7 percent in that time period, U.S. foundations only lost 1.9 percent of the value of their total assets.

¹ Source: The Foundation Center, Guide to U.S. Foundations, 2000-2003. Data sources include: questionnaires mailed out annually to more than 22,000 foundations, foundation websites and 990-PF data from the IRS. Since community foundations do not file 990-PF forms, data for these entities are gathered from surveys and foundation publications. Given the variation in reporting times across data sources, the fiscal picture of the total active U.S. foundations usually contains data spanning four years. Thus, the Foundation Center refers to each year as “circa” indicating that is the year from which most data is obtained; data for circa 1998 is provided in the 2000 Guide; data for circa 1999 is provided in the 2001 Guide, etc.

- Growth rates for total foundation giving in California and the U.S. were more closely aligned from 1999 to 2000, when the growth rate of total foundation giving in both California and the U.S. was around 18 percent. However, while California saw the growth of total foundation giving slow to 3.9 percent from 2000 to 2001, the growth rate of foundation giving in the U.S. overall only slowed to 10.7 percent.

As a result of declining foundation assets and giving in California at the end of the 1990s, California's share of total U.S. foundation assets and giving decreased during this time period.

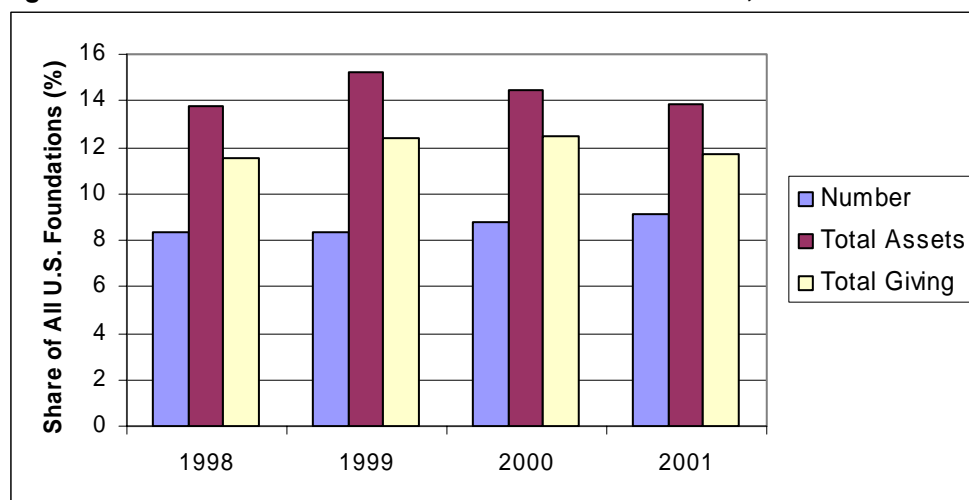
- In 1999, California foundations held 15.2 percent of total assets of foundations nationally. In 2000, California's portion of total U.S. foundation assets had decreased to 14.4 percent. From 2000 to 2001, as the total assets of California's foundations declined at a faster rate than those of the U.S., California's portion of total U.S. foundation assets decreased further to 13.8 percent.
- Total giving by California foundations accounted for 12.4 percent of total giving among foundations in the United States in 1999. This remained relatively constant in 2000, with California representing 12.5 percent of total U.S. giving. A slight decline was seen in 2001, with California at 11.7 percent of total giving among U.S. foundations.
- California's share of the total number of foundations in the country has remained relatively constant – at 8.4 percent in 1999, 8.7 percent in 2000 and 9.1 percent in 2001.

Table 1. Growth of foundations: number, assets and total giving (dollars in thousands)

No. of Foundations		California		United States		
Year		Number	% Growth	Number	% Growth	CA % US
1998		3,908		46,832		8.3
1999		4,208	7.7%	50,201	7.2%	8.4
2000		4,948	17.6%	56,582	12.7%	8.7
2001		5,618	13.5%	61,810	9.2%	9.1
Total Assets						
Year		Assets	% Growth	Assets	% Growth	CA % US
1998		52,947,392		385,051,697		13.8
1999		68,297,099	29.0%	448,610,710	16.5%	15.2
2000		70,125,281	2.7%	486,085,311	8.4%	14.4
2001		66,143,481	-5.7%	476,788,561	-1.9%	13.9
Total Giving						
Year		Giving	% Growth	Giving	% Growth	CA % US
1998		2,234,605		19,456,832		11.5
1999		2,895,548	29.6%	23,321,482	19.9%	12.4
2000		3,432,247	18.5%	27,563,166	18.2%	12.5
2001		3,566,857	3.9%	30,502,393	10.7%	11.7

Source: The Foundation Center, California Foundations, 2000-2003.

Figure 1. California's share of all U.S. foundations: number, assets and total giving



Source: See Table 1.

The Structure of California Foundations

Two critical dimensions of the structure of California foundations – the high concentration of assets and giving among a relatively small number of foundations and the relative importance of community foundations in terms of giving and gifts received – are little affected by the slowdown in the growth of foundation assets and giving in 2000 and 2001.

California foundations are even more concentrated in size than foundations nationally. A small number of California foundations hold the majority of assets and account for a substantial portion of grantmaking in the state.

- California foundations with assets over \$250 million (35 of the state's 5,618 foundations in 2001) hold a greater portion of all of the state's foundation assets as compared to large foundations in the U.S. California foundations with assets over \$250 million held between 63 and 68 percent of all foundation assets in California from 1998 to 2001. During this same time period, U.S. foundations with assets over \$250 million held assets that ranged from 52 to 53 percent of total foundation assets nationally.
- A similar concentration is seen with foundation giving: California foundations with assets over \$250 million accounted for between 42 and 54 percent of total foundation giving in the state between 1998 and 2001. The largest U.S. foundations, on the other hand, accounted for between 37 and 40 percent of total giving among all U.S. foundations for the same time period.
- California foundations with over \$1 billion in assets (a total of 8 or 9 foundations in each of the four years) held between 45 and 52 percent of all foundation assets in California from 1998 to 2001, compared to U.S. foundations of the same size, which held between 35 and 37 percent of total U.S. foundation assets during the same time period.
- California foundations with assets greater than \$1 billion account for a greater share of giving than U.S. foundations on the whole. Twenty-five to 34 percent of total giving in California came from foundations with greater than \$1 billion in assets from 1998 to 2001, while U.S. foundations of the same size accounted for 23 to 25 percent of total giving in the same time period.

Table 2. Foundations by asset category (dollars in thousands)

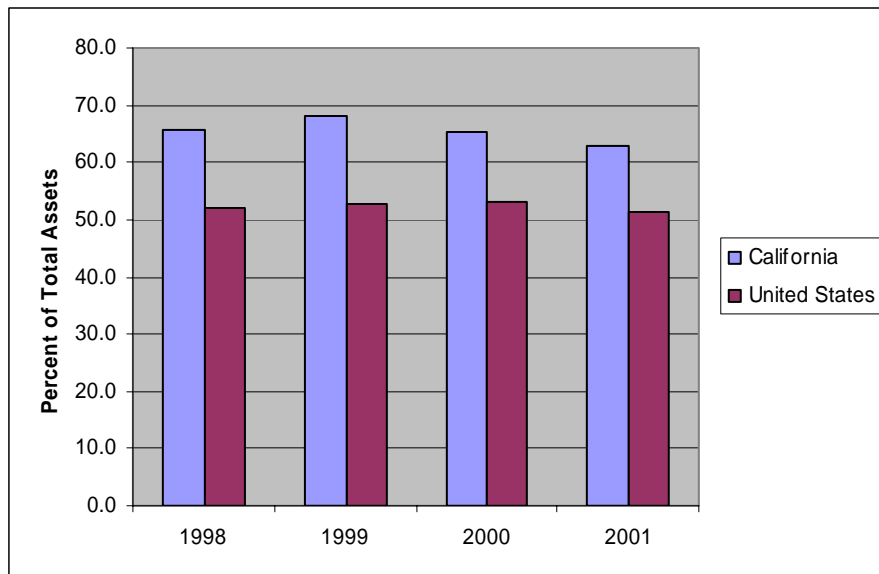
Number of Foundations	1998				1999				2000				2001			
	California		US		California		US		California		US		California		US	
Asset Category	#	%	#	%	#	%	#	%	#	%	#	%	#	%	#	%
\$1 billion and above	8	0.2	45	0.1	9	0.2	48	0.1	9	0.2	47	0.1	8	0.1	43	0.1
\$250 million to \$1 billion	20	0.5	145	0.3	24	0.6	158	0.3	24	0.5	170	0.3	27	0.5	171	0.3
\$50 million to \$250 million	78	2.0	739	1.6	96	2.3	839	1.7	106	2.1	908	1.6	104	1.9	911	1.5
\$10 million to \$50 million	261	6.7	2,820	6.0	307	7.3	3,204	6.4	349	7.1	3,446	6.1	358	6.4	3,475	5.6
\$1 million to \$10 million	1,200	30.7	13,853	29.6	1,344	31.9	15,161	30.2	1,529	30.9	16,770	29.6	1,657	29.5	17,323	28.0
\$0 to \$1 million	2,341	59.9	29,248	62.4	2,428	57.7	30,791	61.3	2,931	59.2	35,241	62.3	3,464	61.7	39,887	64.5
Total	3,908	100.0	46,850	100.0	4,208	100.0	50,201	100.0	4,948	100.0	56,582	100.0	5,618	100.0	61,810	100.0

Foundation Assets	1998				1999				2000				2001			
	California		US		California		US		California		US		California		US	
Asset Category	\$	%	\$	%	\$	%	\$	%	\$	%	\$	%	\$	%	\$	%
\$1 billion and above	\$26,635,875	50.3	\$135,378,746	35.2	\$35,549,760	52.1	\$164,808,753	36.7	\$34,669,831	49.4	\$177,437,054	36.5	\$29,532,717	44.6	\$166,011,634	34.8
\$250 million to \$1 billion	8,164,746	15.4	64,382,173	16.7	11,079,966	16.2	72,600,399	16.2	11,063,936	15.8	80,153,432	16.5	12,085,561	18.3	79,498,487	16.7
\$50 million to \$250 million	7,917,730	15.0	74,212,287	19.3	9,846,055	14.4	86,408,988	19.3	11,139,576	15.9	92,898,096	19.1	10,530,144	15.9	91,841,430	19.3
\$10 million to \$50 million	5,611,953	10.6	59,492,925	15.5	6,618,647	9.7	67,517,204	15.1	7,357,015	10.5	72,466,896	14.9	7,657,684	11.6	73,798,330	15.5
\$1 million to \$10 million	3,959,891	7.5	43,602,991	11.3	4,521,579	6.6	48,647,541	10.8	5,060,943	7.2	53,298,538	11.0	5,379,894	8.1	54,682,441	11.5
\$0 to \$1 million	657,196	1.2	7,982,576	2.1	681,090	1.0	8,627,825	1.9	834,581	1.2	9,831,294	2.0	957,479	1.4	10,956,240	2.3
Total	\$52,947,391	100.0	\$385,051,698	100.0	\$68,297,097	100.0	\$448,610,710	100.0	\$70,125,882	100.0	\$486,085,310	100.0	\$66,143,479	100.0	\$476,788,562	100.0

Total Giving	1998				1999				2000				2001			
	California		US		California		US		California		US		California		US	
Asset Category	\$	%	\$	%	\$	%	\$	%	\$	%	\$	%	\$	%	\$	%
\$1 billion and above	\$640,330	26.9	\$4,391,927	22.6	\$916,836	31.7	\$5,864,676	25.1	\$1,132,212	33.6	\$6,881,248	25.0	\$904,643	25.4	\$7,247,098	23.8
\$250 million to \$1 billion	364,275	15.3	2,886,721	14.8	613,336	21.2	3,329,298	14.3	675,052	20.0	4,097,243	14.9	695,715	19.5	4,160,673	13.6
\$50 million to \$250 million	385,873	16.2	3,773,342	19.4	452,552	15.6	4,456,403	19.1	510,006	15.1	5,056,267	18.3	688,164	19.3	5,884,810	19.3
\$10 million to \$50 million	364,261	15.3	3,612,298	18.6	393,967	13.6	4,051,998	17.4	451,182	13.4	4,811,243	17.5	519,772	14.6	5,471,036	17.9
\$1 million to \$10 million	459,265	19.3	3,183,919	16.4	348,006	12.0	3,821,756	16.4	434,149	12.9	4,473,967	16.2	522,661	14.7	5,224,348	17.1
\$0 to \$1 million	162,380	6.8	1,608,627	8.3	170,852	5.9	1,797,351	7.7	165,931	4.9	2,243,200	8.1	235,901	6.6	2,514,425	8.2
Total	\$2,376,384	100.0	\$19,456,834	100.0	\$2,895,549	100.0	\$23,321,482	100.0	\$3,368,532	100.0	\$27,563,168	100.0	\$3,566,856	100.0	\$30,502,390	100.0

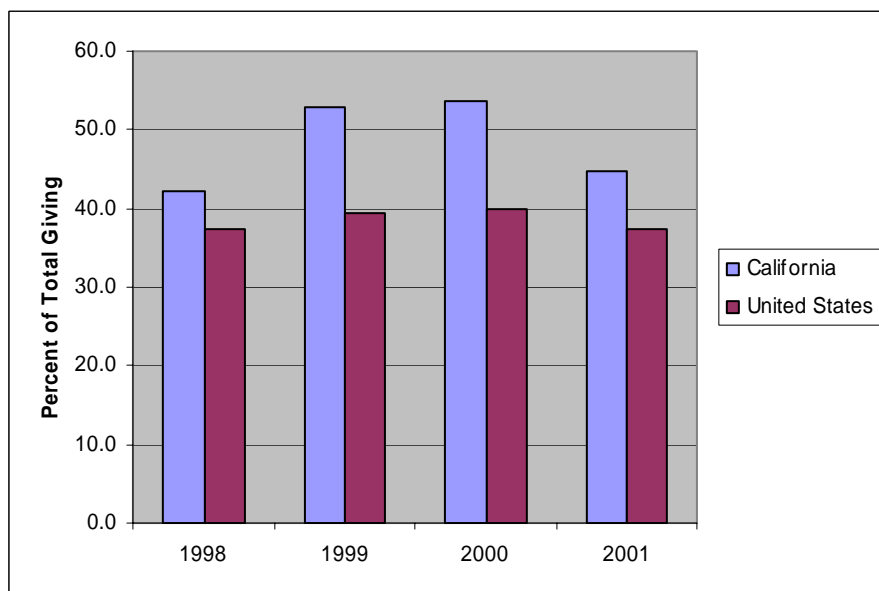
Source: The Foundation Center, Guide to U.S. Foundations, 2000-2003.

Figure 2. Percent of total foundation assets held by foundations with over \$250 million in assets



Source: See Table 2.

Figure 3. Percent of total foundation giving of foundations with over \$250 million in assets

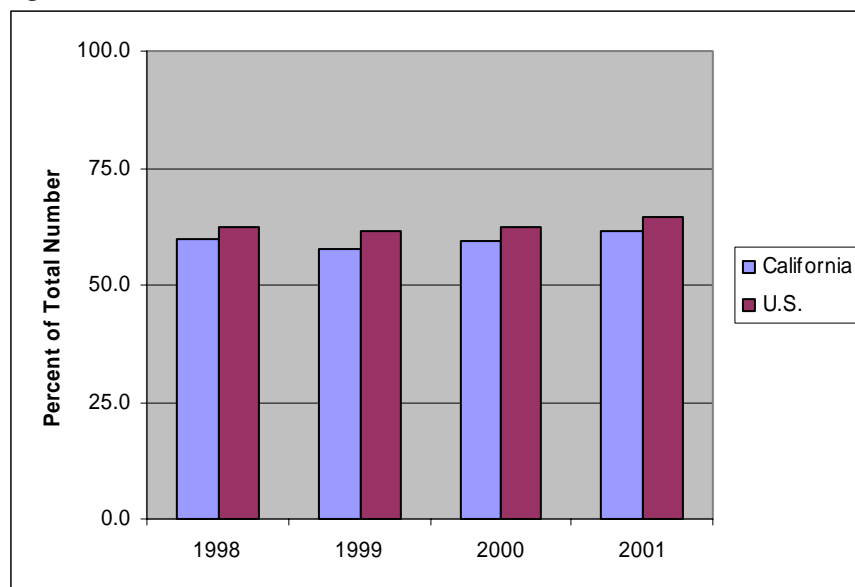


Source: See Table 2.

At the other end of the size spectrum, over half of California foundations have assets of \$1 million or less, and their numbers are increasing.

- In 2001, California foundations with assets of less than \$1 million accounted for 62 percent of all foundations in California. This represents a slight increase from 1998, when small foundations accounted for about 60 percent of all foundations in California. A slight decrease was seen in 1999, when foundations with assets of \$1 million or less represented 58 percent of the total number of California foundations, but the trend has been upward and mirrors the trend seen in the U.S. as a whole, which has had a slightly greater percentage of small foundations than California in the same time period, ranging from 61 to 65 percent of all foundations in the U.S.

Figure 4. Percent of total number of foundations with less than \$1 million in assets



Source: See Table 2.

In terms of the types of foundations, private independent foundations account for the great majority of the foundation sector, in terms of numbers, assets and giving, both in California and nationally. The most distinctive feature of California's foundation sector is the prominent role played by community foundations in terms of foundation giving and gifts received.

California's community foundations account for a higher share of the giving of all foundations within the state, than do community foundations nationally.

- California community foundations represented 11 percent of giving by all of the state's foundations in 1998, while community foundations nationally represented about 8 percent of all foundation giving. While giving among U.S. community foundations remained constant at about 8 percent through 2001, community foundations in California accounted for 13 percent of the total giving in 1999 and 12 percent in both 2000 and 2001.
- Community foundations within the state have accounted for a larger share of gifts received by all foundations than is the case nationally from 1998 through 2000. However, the community foundation share of gifts received by foundations within the state dipped significantly from the approximately 20 percent to 7 percent in 2001. Community foundations nationally also dipped but at a much smaller rate.
- Community foundations in California account for about 1 percent of the total number of foundations and about 6 percent of total assets between 1998 and 2001, comparable to the community foundation share nationally.

Table 3. Aggregate fiscal data by foundation type (dollars in thousands)

Number of Foundations	1998				1999				2000				2001			
	California		US		California		US		California		US		California		US	
Foundation Type	#	%	#	%	#	%	#	%	#	%	#	%	#	%	#	%
Independent	3,465	88.7	41,751	89.2	3,755	89.2	44,824	89.3	4,388	88.7	50,532	89.3	4,978	88.6	55,120	89.2
Corporate	107	2.7	2,022	4.3	100	2.4	2,019	4.0	109	2.2	2,018	3.6	120	2.1	2,170	3.5
Community	31	0.8	437	0.9	34	0.8	519	1.0	40	0.8	560	1.0	43	0.8	602	1.0
Operating	305	7.8	2,622	5.6	319	7.6	2,839	5.7	411	8.3	3,472	6.1	477	8.5	3,918	6.3
Total	3,908	100.0	46,832	100.0	4,208	100.0	50,201	100.0	4,948	100.0	56,582	100.0	5,618	100.0	61,810	100.0

Foundation Assets	1998				1999				2000				2001			
	California		US		California		US		California		US		California		US	
Foundation Type	\$	%	\$	%	\$	%	\$	%	\$	%	\$	%	\$	%	\$	%
Independent	\$39,334,976	74.3	\$326,949,406	84.9	51,315,046	75.1	381,364,659	85.0	50,477,124	72.0	408,749,391	84.1	48,575,592	73.4	403,526,427	84.6
Corporate	842,673	1.6	13,108,973	3.4	1,148,157	1.7	15,257,698	3.4	1,248,930	1.8	15,899,090	3.3	1,105,033	1.7	15,577,590	3.3
Community	3,342,630	6.3	22,954,599	6.0	4,202,158	6.2	27,648,672	6.2	4,306,836	6.1	30,463,674	6.3	4,586,657	6.9	30,300,585	6.4
Operating	9,427,114	17.8	22,038,719	5.7	11,631,738	17.0	24,339,680	5.4	14,092,392	20.1	30,973,156	6.4	11,876,198	18.0	27,383,960	5.7
Total	\$52,947,393	100.0	\$385,051,697	100.0	68,297,099	100.0	448,610,709	100.0	70,125,282	100.0	486,085,311	100.0	66,143,480	100.0	476,788,562	100.0

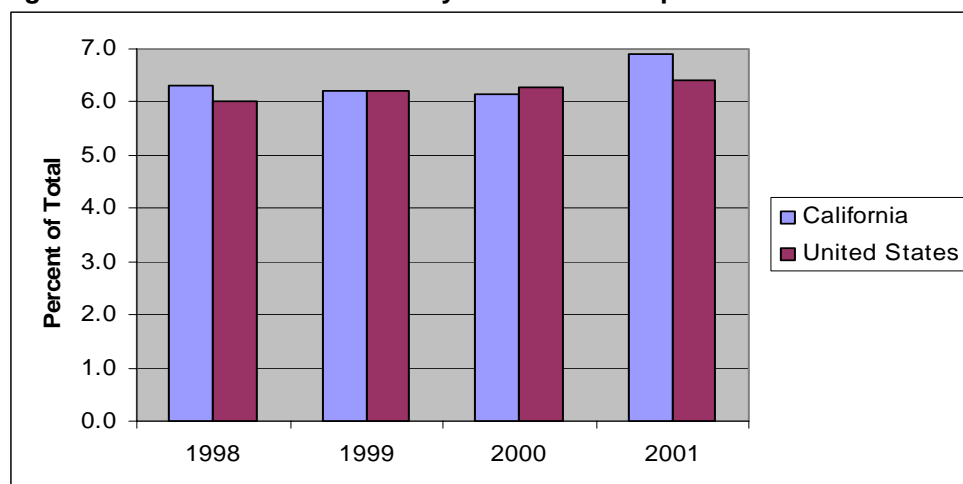
Gifts Received	1998				1999				2000				2001			
	California		US		California		US		California		US		California		US	
Foundation Type	\$	%	\$	%	\$	%	\$	%	\$	%	\$	%	\$	%	\$	%
Independent	\$ 1,704,412	71.7	\$ 16,269,846	72.1	1,712,657	39.6	24,097,438	75.1	2,347,913	64.5	19,155,555	69.4	5,327,307	85.7	20,538,943	71.5
Corporate	104,671	4.4	2,653,868	11.8	171,071	4.0	3,313,248	10.3	286,658	7.9	2,902,208	10.5	133,098	2.1	3,040,268	10.6
Community	483,927	20.4	2,582,396	11.4	787,659	18.2	3,295,378	10.3	751,524	20.7	3,828,552	13.9	455,293	7.3	3,185,127	11.1
Operating	83,372	3.5	1,067,634	4.7	1,649,405	38.2	1,370,610	4.3	252,314	6.9	1,727,480	6.3	301,630	4.9	1,949,832	6.8
Total	\$ 2,376,382	100.0	\$ 22,573,744	100.0	4,320,792	100.0	32,076,674	100.0	3,638,409	100.0	27,613,795	100.0	6,217,328	100.0	28,714,170	100.0

Total Giving	1998				1999				2000				2001			
	California		US		California		US		California		US		California		US	
Foundation Type	\$	%	\$	%	\$	%	\$	%	\$	%	\$	%	\$	%	\$	%
Independent	\$ 1,801,376	80.6	\$ 14,933,649	76.8	2,260,455	78.1	17,989,368	77.1	2,741,044	79.9	21,346,232	77.4	2,899,284	81.3	23,705,289	77.7
Corporate	136,258	6.1	2,446,134	12.6	157,286	5.4	2,813,557	12.1	160,075	4.7	2,984,645	10.8	143,722	4.0	3,284,224	10.8
Community	249,042	11.1	1,457,789	7.5	385,136	13.3	1,849,448	7.9	424,263	12.4	2,166,343	7.9	426,291	12.0	2,403,204	7.9
Operating	47,930	2.1	619,260	3.2	92,672	3.2	669,108	2.9	106,866	3.1	1,065,947	3.9	97,560	2.7	1,109,675	3.6
Total	\$ 2,234,606	99.9	\$ 19,456,832	100.1	\$ 2,895,549	100.0	\$23,321,481	100.0	\$3,432,248	100.0	\$27,563,167	100.0	\$3,566,857	100.0	\$30,502,392	100.0

Data includes all dependent, corporate, community and operating foundations making grants of at least one dollar during the relevant fiscal reporting period. Sources of data for foundations include IRS information returns (Form 990-PF), foundation reports and information reported to The Foundation Center on annual surveys of foundations with assets of at least \$100,000 or giving of \$50,000 or more. Assets are stated at market value. Total giving amount includes grants, scholarships and employee matching gifts; it does not include all qualifying distributions, e.g. loans, PRIs, set-asides and program or other administrative expenses. For definition of foundation types see: *California Foundations: A Snapshot*, The Center on Philanthropy and Public Policy, 2001.

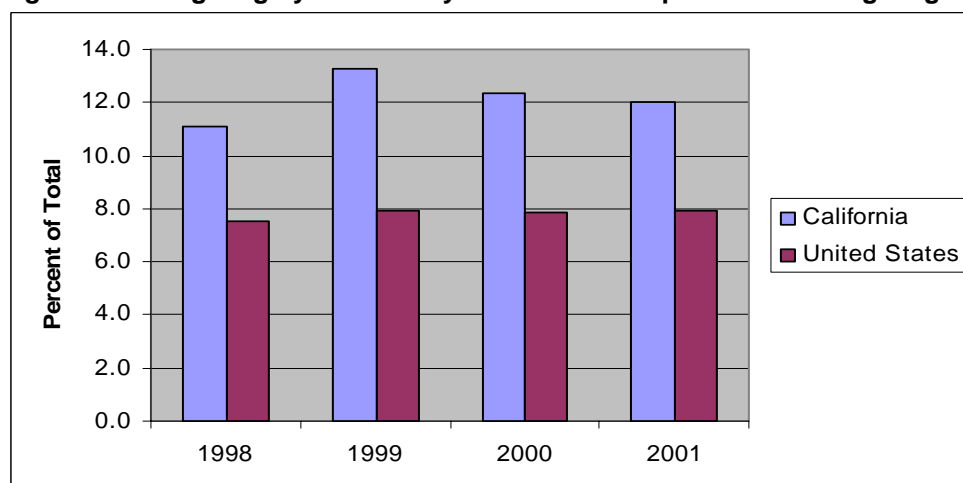
Source: The Foundation Center, Guide to US Foundations, 2000-2003.

Figure 5. Total assets of community foundations as percent of total assets



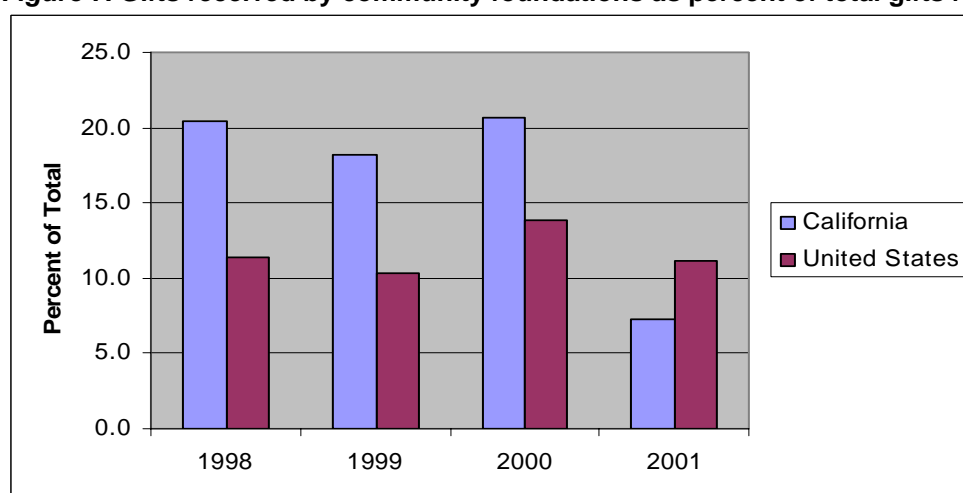
Source: See Table 3.

Figure 6. Total giving by community foundations as percent of total giving



Source: See Table 3.

Figure 7. Gifts received by community foundations as percent of total gifts received



Source: See Table 3.

Grantmaking Trends and Patterns²

The major beneficiary of California's philanthropic growth is the people of the state of California. California's foundations focus the majority of their grantmaking on nonprofits within the state.

- Between 68 and 70 percent of grants from California foundations went to in-state grant recipients from 1998 to 2000; this increased to 74 percent in 2001.
- The net flow of grants in and out of California has changed over the period. There was a net flow of grants into California in 1998 and 1999 of \$28.3 million and \$20.2 million, respectively. This changed to a net outflow of \$36.6 million and \$33.6 million in 2000 and 2001, respectively.

Table 4. California foundation giving to California and non-California recipients (dollars in thousands)

	1998		1999		2000		2001	
Category	\$	%	\$	%	\$	%	\$	%
California Foundations Giving to California Recipients	\$835,874	68.7	\$1,020,757	69.7	\$1,362,042	67.5	\$2,050,280	74.3
California Foundations Giving to Non-California Recipients	381,357	31.3	443,744	30.3	654,742	32.5	\$707,473	25.7
Total	\$1,217,231	100.0	\$1,464,500	100.0	\$2,016,784	100.0	\$2,757,753	100.0

Source: The Foundation Center, Grants Index Database, 2000-2003.

Table 5. Flow of grants into and out of California (dollars in thousands)

Category	1998	1999	2000	2001
Non-California Foundations Giving to California Recipients	\$409,685	\$464,000	\$618,144	\$673,792
California Foundations Giving to Non-California Recipients	381,357	443,774	654,742	707,473
Net Flow into California	\$28,328	\$20,226	-\$36,598	-\$33,681

Source: The Foundation Center, Grants Index Database, 2000-2003.

² The analysis in this section is based on The Foundation Center's grants database. The database is a sample of mostly large foundations (samples consist of between 1,007 and 1,015 foundations for each of the years in the 1998-2001 period) which represents approximately half of all U.S. foundation giving and California giving each year. The sample includes grants of \$10,000 but does not include grants from donor-designated funds of community foundations or grants to individuals.

Patterns of grantmaking by the state's foundations reveal their top funding priorities to be health, education, human services, the environment, and the arts. The actual dollars flowing to these programmatic areas has increased in most instances over the period 1998-2001, although the relative ranking has been somewhat altered.

Health has been the top funding priority over the period, driven by the significant philanthropic resources within the health care foundations that were created from the conversion of nonprofit health care organizations.

- Health grants have increased from almost \$250 million in 1998 to \$682 million in 2001, with the percent of all grantmaking ranging from 20 percent to 26 percent for the period.

Education grantmaking, while the top foundation priority nationally, typically is the second highest priority within the state.

- In 2001, education's share of grantmaking within the state topped that of health, at 28 percent, compared to between 15 and 18 percent in the preceding three years. This jump in 2001 is due to a \$400 million dollar grant made by the Hewlett Foundation to Stanford University.

Human services funding experienced a decline during 2001, after holding relatively stable during the previous three years.

- The total dollars going to human services increased from 1998 to 2000, when it was the third highest funding area. But, human services experienced a decline in actual dollars from 2000 to 2001, and fell to fourth in terms of relative funding priority.

The environment is an important and growing priority for California foundations.

- Grants for the environment grew from \$100 million in 1998 to over \$312 million in 2001. In terms of foundation giving within the state, environment's share rose from 9 percent in 1998 to a high of 14 percent in 2000, and 11 percent in 2001. This compares to a steady 6 percent of foundation giving nationally.

Funding for arts and culture continues to decline in terms of the share of total grantmaking.

- Funding for the arts declined from 15 percent in 1998 to 9 percent in 2001. Arts fell from fourth to fifth in funding priority, as it was overtaken by the environment.

California foundations continue to decrease their emphasis on science and technology funding.

- Science and technology grantmaking has continued to decrease both in California and nationally, though giving by California foundations to science and technology is still greater on a proportional level than that of national foundations, at 5 percent and 3 percent respectively.

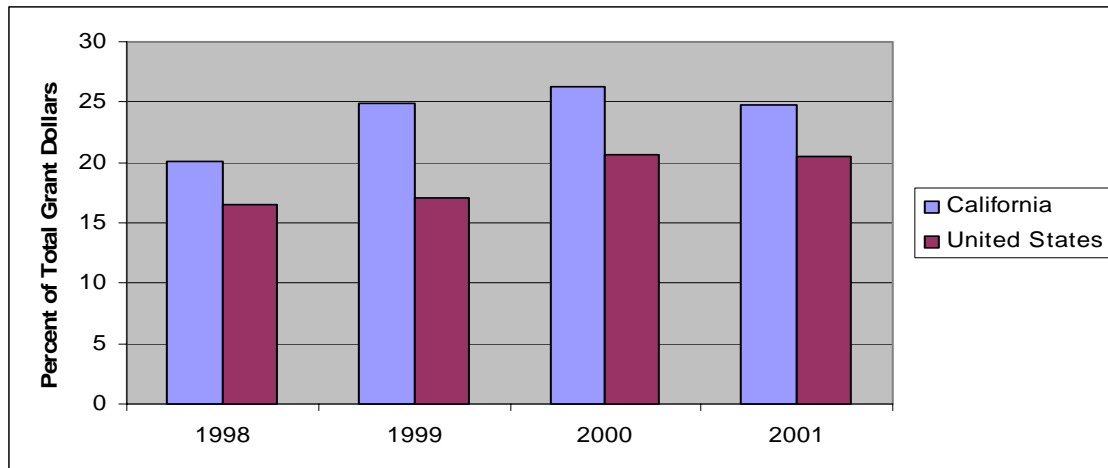
Table 6. Distribution of grant dollars by subject categories (dollars in thousands)

Subject	1998				1999				2000				2001			
	California		United States		California		United States		California		United States		California		United States	
	Amount	%	Amount	%	Amount	%	Amount	%	Amount	%	Amount	%	Amount	%	Amount	%
Arts and Culture	\$184,762	15.2	\$1,439,157	14.8	\$152,407	10.4	\$1,554,344	13.4	\$188,162	9.3	\$1,798,615	12.0	\$247,881	9.0	\$2,047,972	12.2
Education	213,061	17.5	2,366,631	24.4	250,729	17.1	2,822,129	24.4	302,029	15.0	3,779,009	25.2	\$773,418	28.0	\$4,492,540	26.8
Environment and Animals	107,788	8.9	539,774	5.6	154,548	10.6	731,709	6.3	274,691	13.6	987,425	6.6	\$312,337	11.3	\$1,043,896	6.2
Health	244,788	20.1	1,602,137	16.5	363,965	24.9	1,981,949	17.1	529,961	26.3	3,089,922	20.6	\$681,643	24.7	\$3,434,967	20.5
Human Services	193,719	15.9	1,455,932	15.0	217,238	14.8	1,869,291	16.2	316,634	15.7	2,169,075	14.4	\$306,406	11.1	\$2,312,124	13.8
Intl Affairs/ Human Rights	20,462	1.7	313,485	3.2	24,100	1.6	346,152	3.0	39,786	2.0	414,232	2.8	\$41,000	1.5	\$398,816	2.4
Public/Society Benefit	95,096	7.8	1,149,085	11.8	112,403	7.7	1,320,872	11.4	163,678	8.1	1,691,746	11.3	\$181,707	6.6	\$1,826,594	10.9
Science and Tech	108,556	8.9	369,337	3.8	144,184	9.8	411,782	3.6	129,164	6.4	414,058	2.8	\$122,906	4.5	\$489,249	2.9
Social Science	19,361	1.6	243,386	2.5	22,108	1.5	261,933	2.3	39,006	1.9	324,188	2.2	\$36,939	1.3	\$348,403	2.1
Religion	29,422	2.4	220,536	2.3	22,565	1.5	263,304	2.3	28,341	1.4	329,937	2.2	\$45,066	1.6	\$351,396	2.1
Other	215	0.0	11,933	0.1	253	0.0	10,719	0.1	5,332	0.3	17,260	0.1	\$8,451	0.3	\$17,348	0.1
Total	\$1,217,231	100.0	\$9,711,395	100.0	\$1,464,500	100.0	\$11,574,183	100.0	\$2,016,784	100.0	\$15,015,467	100.0	\$2,757,753	100.0	\$16,763,305	100.0

Subject area definitions: *Arts and Culture*: Arts – multipurpose, Media and communications, Visual arts/architecture, Museums, Performing arts, Humanities, Historic preservation. *Education*: Elementary and secondary, Vocational and technical, Higher education, Graduate and professional, Adult and continuing, Library science/libraries, Student services, Educational services. *Environment*: Environment, Animals and wildlife. *Health*: General and rehabilitative, Policy, management and information, Hospitals and medical care, Reproductive health care, Public health, Specific diseases, Medical research, Mental health. *Human Services*: Crime, justice and legal services, Employment, Food, nutrition, and agriculture, Housing and shelter, Safety and disaster relief, Recreation and sports, Youth development, Human services – multipurpose. *International*: International affairs, development, peace, and human rights. *Public/Society Benefit*: Civil rights and social action, Community improvement and development, Philanthropy and voluntarism, Public affairs. *Science and Technology*: Policy, management, and information, General science, Physical science, Technology, Life science. *Social Science*: Social science and economics, Interdisciplinary/other. *Religion*: Religion.

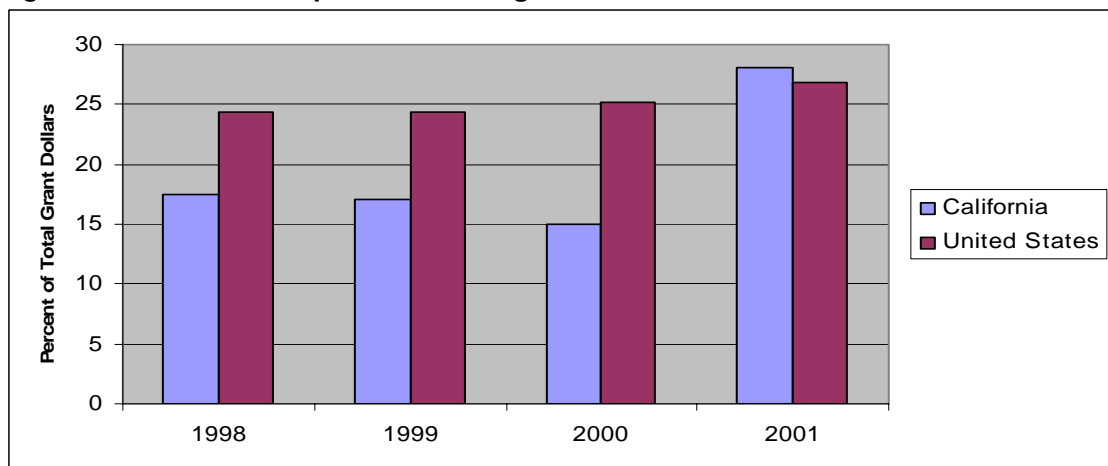
Source: The Foundation Center, Grants Index Database, 2000-2003.

Figure 8. Health as a percent of total grant dollars



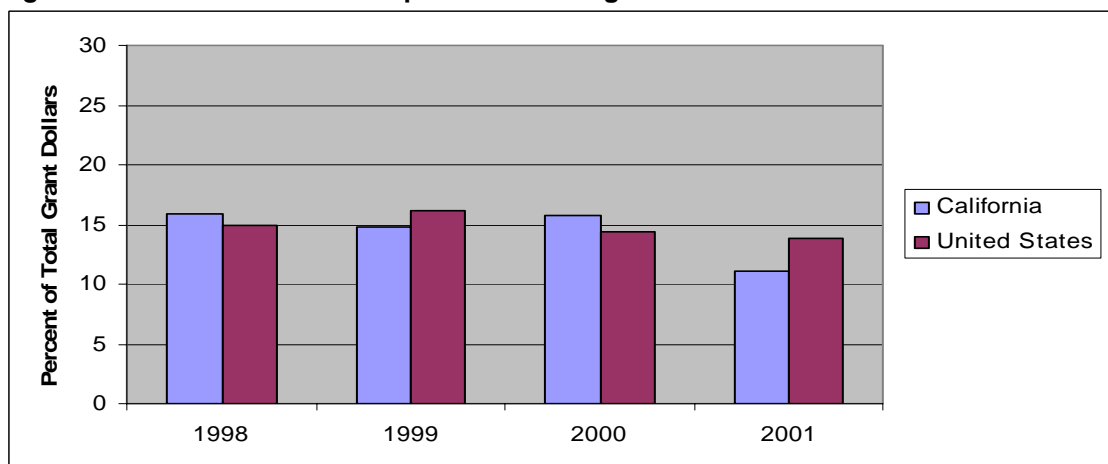
Source: See Table 4.

Figure 9. Education as a percent of total grant dollars



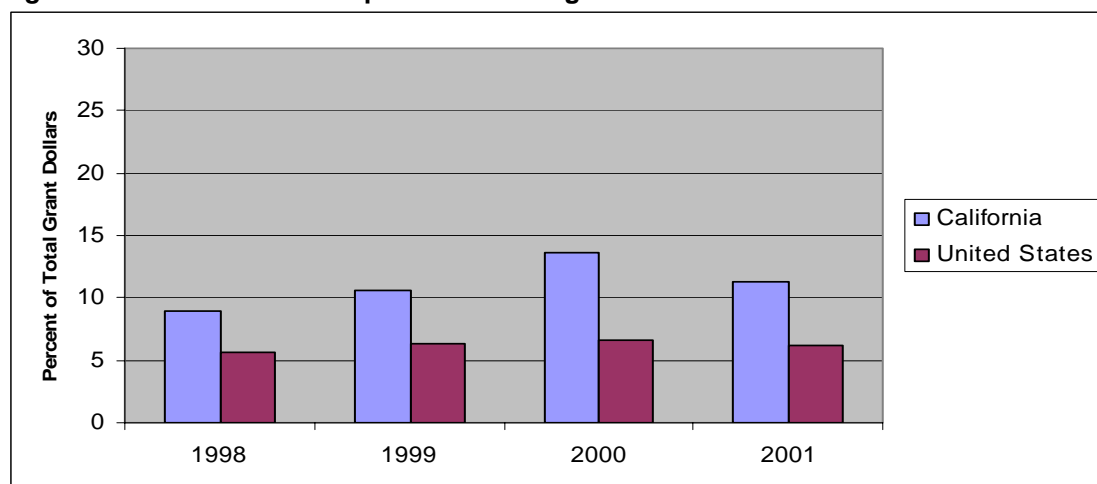
Source: See Table 4.

Figure 10. Human services as a percent of total grant dollars



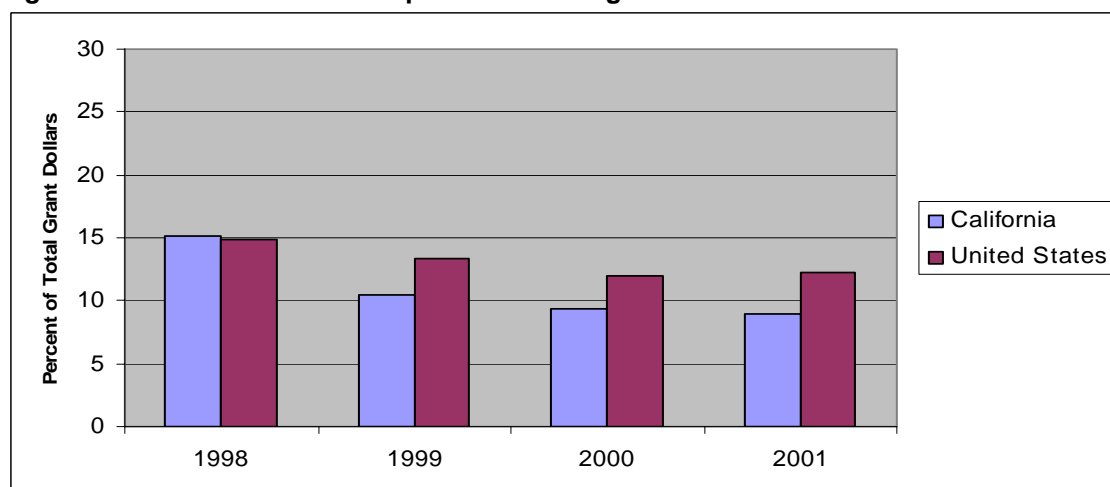
Source: See Table 4.

Figure 11. Environment as a percent of total grant dollars



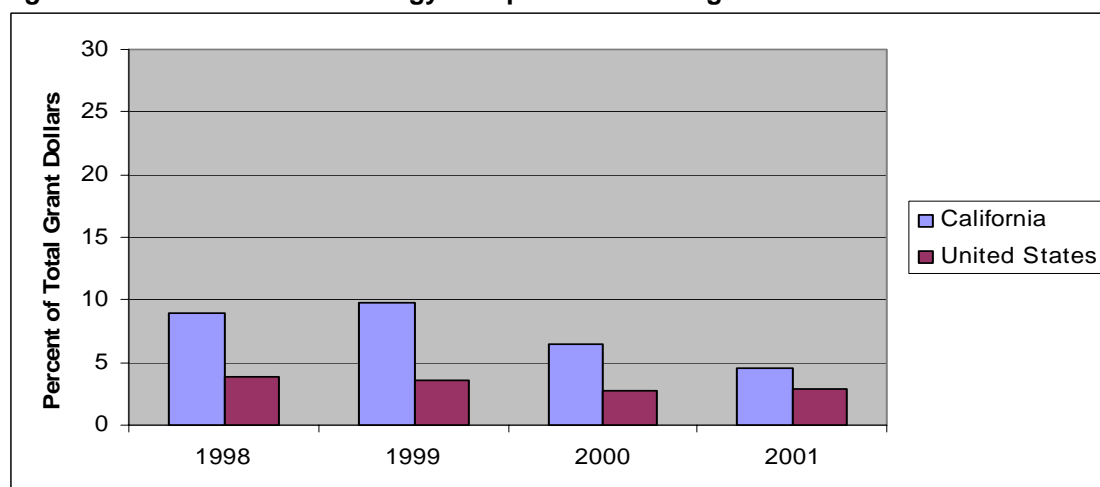
Source: See Table 4.

Figure 12. Arts and culture as a percent of total grant dollars



Source: See Table 4.

Figure 13. Science and technology as a percent of total grant dollars



Source: See Table 4.

Conclusion

The growth of the assets and giving of California foundations slowed in 2000 and 2001 after robust growth throughout the 1990s that peaked in 1999. This slowdown was not unique to California, but it was more extreme than the slowdown in growth among foundations nationally. In fact, foundation assets in California not only slowed in growth in 2001, but actually declined by 5.7 percent. Despite the recent turn of events, the assets and giving of California foundations still far surpass levels from just a few years previously.

Even with the changes that have occurred in 2000 and 2001, the most distinctive features of California's foundation sector still remain – the degree of size concentration and the prominent role of community foundations. Foundation assets and giving are more concentrated in California than they are nationally. In 2001, the top 10 foundations in terms of assets held 47.3 percent of the assets and accounted for 27.4 percent of the giving of all California foundations; and the top 50 foundations in terms of assets held 67.1 percent of the assets and accounted for 47.8 percent of the giving of all California foundations. And, community foundations account for 12 percent of the giving of all California foundations in 2001 compared to 7.9 nationally. The significant departure is in terms of gifts received, where the percent of gifts received by community foundations nationally exceeds the community foundation share in California (11.1 percent versus 7.3 percent), which reflects a reversal of recent patterns.

Despite the changing fortunes of California foundations in 2000 and 2001, their grantmaking priorities have not been dramatically impacted. Health, education, and human services continue to garner the majority of funds, and the keen interest of California's foundations in environmental issues continues to grow.

This updated baseline analysis of California foundations reflects the slowdown in the growth of foundation philanthropy in 2000 and 2001 after an unprecedented period of growth that seems to have peaked in 1999. It is too early to assess whether the patterns from these last two years are simply a pause before further growth or the beginning of a period of more lackluster growth in foundation philanthropy in the Golden State.

APPENDIX A: 100 Largest Foundations by Assets, Circa 2001

2001 Rank	Name	Type	Assets	Total Giving	Fiscal Date
1.	J. Paul Getty Trust	OP	\$8,793,485,757	\$19,579,820	6/30/2001
2.	The David and Lucile Packard Foundation	IN	6,196,520,868	428,897,276	12/31/2001
3.	The William and Flora Hewlett Foundation	IN	6,080,721,309	119,955,933	12/31/2001
4.	The California Endowment	IN	3,366,256,100	147,898,000	2/28/2002
5.	The James Irvine Foundation	IN	1,378,433,649	59,017,797	12/31/2001
6.	The Packard Humanities Institute	OP	1,302,804,659	20,655,346	12/31/2000
7.	W. M. Keck Foundation	IN	1,263,938,000	58,114,418	12/31/2001
8.	Marin Community Foundation	CM	1,150,556,205	50,524,713	6/30/2001
9.	The California Wellness Foundation	IN	985,910,600	41,727,662	12/31/2001
10.	The Ahmanson Foundation	IN	785,613,000	29,443,705	10/31/2001
11.	Weingart Foundation	IN	675,303,638	36,004,253	6/30/2002
12.	The San Francisco Foundation	CM	672,512,115	67,459,403	6/30/2002
13.	The Henry J. Kaiser Family Foundation	OP	597,891,506	1,358,843	12/31/2001
14.	Wayne & Gladys Valley Foundation	IN	588,367,987	15,712,982	9/30/2001
15.	Community Foundation Silicon Valley	CM	539,652,366	77,103,102	6/30/2002
16.	California Community Foundation	CM	535,945,270	56,551,166	6/30/2002
17.	The Norton Simon Foundation	IN	502,085,266	5,000,500	12/31/2000
18.	Evelyn and Walter Haas, Jr. Fund	IN	488,632,860	21,790,730	12/31/2001
19.	Peninsula Community Foundation	CM	478,503,157	63,233,274	12/31/2001
20.	Richard & Rhoda Goldman Fund	IN	431,931,333	32,540,477	12/31/2000
21.	H. N. & Frances C. Berger Foundation	IN	403,833,632	10,378,667	12/31/2000
22.	The San Diego Foundation	CM	401,264,000	39,161,583	6/30/2001
23.	Arnold and Mabel Beckman Foundation	IN	400,843,343	22,399,144	8/31/2001
24.	The McConnell Foundation	IN	370,112,590	9,421,205	12/31/2000
25.	Charles and Helen Schwab Foundation	IN	344,542,135	7,854,900	6/30/2000
26.	Stuart Foundation	IN	329,256,787	19,055,804	12/31/2001
27.	The Ralph M. Parsons Foundation	IN	323,106,101	16,000,512	12/31/2001
28.	May and Stanley Smith Charitable Trust	IN	320,556,270	12,076,811	12/31/2000
29.	Koret Foundation	IN	315,112,125	16,799,871	12/31/2001
30.	The Wells Fargo Foundation	CS	279,334,009	21,321,223	12/31/2000
31.	The Milken Family Foundation	IN	271,650,942	31,577,251	11/30/2000
32.	Thomas and Dorothy Leavey Foundation	IN	267,729,622	15,643,429	12/31/2000
33.	Miriam and Peter Haas Fund	IN	265,612,590	12,482,542	12/31/2000
34.	Colburn Music Fund	IN	255,778,690	8,129,076	6/30/2002
35.	UniHealth Foundation	IN	254,479,474	5,486,255	9/30/2001
36.	Dan Murphy Foundation	IN	245,329,729	12,681,511	12/31/2000
37.	Walter and Elise Haas Fund	IN	233,139,808	10,390,205	12/31/2000
38.	Broad Foundation	IN	222,308,387	3,283,100	12/31/2000
39.	Waitt Family Foundation	IN	207,252,015	14,632,347	12/31/2000
40.	The Walt and Lilly Disney Foundation	IN	203,041,343	8,444,000	12/31/2000
41.	Henry L. Guenther Foundation	IN	184,744,357	12,530,000	12/31/2000
42.	Santa Barbara Foundation	CM	183,769,046	5,255,624	12/31/2001
43.	The Amateur Athletic Foundation of Los Angeles	IN	181,578,885	2,822,493	12/31/2000
44.	The Kenneth T. and Eileen L. Norris Foundation	IN	179,549,907	9,121,291	11/30/2001
45.	S. H. Cowell Foundation	IN	176,802,653	8,547,471	12/31/2000
46.	Carrie Estelle Doheny Foundation	IN	173,440,311	7,282,719	12/31/2001
47.	The Noyce Foundation	IN	167,335,397	7,538,580	12/31/2001

APPENDIX A: 100 Largest Foundations by Assets, Circa 2001 (cont.)

2001

Rank	Name	Type	Assets	Total Giving	Fiscal Date
48.	The Larry L. Hillblom Foundation, Inc.	IN	160,083,400	3,155,000	12/31/2000
49.	Fritz B. Burns Foundation	IN	152,014,451	7,947,000	9/30/2001
50.	Colburn Foundation	IN	149,449,064	7,179,500	12/31/2001
51.	Maddie's Fund	IN	148,328,858	4,380,611	8/31/2000
52.	The Fletcher Jones Foundation	IN	148,310,494	7,124,165	12/31/2001
53.	Sierra Health Foundation	IN	144,041,090	3,357,066	12/31/2001
54.	The Broad Art Foundation	OP	137,476,607	477,500	6/30/2002
55.	The Carnegie Foundation for the Advancement of Teaching	OP	134,613,952	201,350	6/30/2001
56.	William K. Bowes, Jr. Foundation	IN	133,110,273	5,061,780	12/31/2000
57.	The Thomas and Stacey Siebel Foundation	IN	132,876,402	2,070,000	12/31/1999
58.	The Eisner Foundation, Inc.	IN	128,560,000	7,000,000	12/31/2001
59.	S. Mark Taper Foundation	IN	126,356,043	6,747,720	12/31/2001
60.	Cisco Systems Foundation	CS	125,001,798	7,187,424	7/31/2001
61.	The William G. Irwin Charity Foundation	IN	123,373,665	6,093,650	12/31/2000
62.	The East Bay Community Foundation	CM	122,578,355	16,230,001	6/30/2001
63.	Archstone Foundation	IN	122,198,875	5,506,946	6/30/2001
64.	Monterey Bay Aquarium Research Institute	OP	121,179,893	15,043	12/31/1999
65.	The Christensen Fund	IN	118,829,935	18,911,866	11/30/2001
66.	B. C. McCabe Foundation	IN	117,355,224	4,974,468	12/31/2000
67.	Morgridge Family Foundation	IN	117,133,491	27,802,108	12/31/2000
68.	Frederick R. Weisman Philanthropic Foundation	IN	115,275,716	657,388	12/31/2000
69.	D&DF Foundation	IN	114,884,462	9,503,289	6/30/2000
70.	Lakeside Foundation	IN	114,041,314	5,687,740	12/31/2000
71.	The Grousbeck Family Foundation	IN	109,459,951	5,388,684	11/30/2000
72.	L. K. Whittier Foundation	IN	109,398,031	5,482,000	4/30/2001
73.	Wasserman Foundation	IN	108,489,214	10,708,880	12/31/2000
74.	Y. & H. Soda Foundation	IN	105,813,188	3,671,969	11/30/2001
75.	Walter S. Johnson Foundation	IN	105,266,705	4,586,976	12/31/2001
76.	The Hogan Family Foundation, Inc.	OP	104,159,509	32,167	9/30/1999
77.	Flora Family Foundation	IN	103,770,309	5,160,515	12/31/2001
78.	Compton Foundation, Inc.	IN	102,015,741	8,396,884	12/31/2000
79.	Erik E. and Edith H. Bergstrom Foundation, Inc.	IN	101,194,621	3,348,257	9/30/2000
80.	The Price Family Charitable Fund	IN	99,321,512	40,057,177	12/31/2001
81.	Alliance Healthcare Foundation	IN	98,287,741	4,673,811	6/30/2001
82.	Lund Foundation	IN	97,351,715	5,499,950	12/31/2001
83.	The Zellerbach Family Foundation	IN	94,846,292	3,923,100	12/31/2001
84.	Elizabeth and Stephen Bechtel, Jr. Foundation	IN	93,949,560	5,352,500	12/31/2001
85.	The R. Stanton Avery Foundation	IN	92,370,047	3,829,926	12/31/2000
86.	Joseph Drown Foundation	IN	92,370,042	5,290,671	3/31/2001
87.	Mary Stuart Rogers Foundation	IN	91,892,883	24,274,967	12/31/2000
88.	Levi Strauss Foundation	CS	90,741,095	12,472,180	12/31/2001
89.	Pfaffinger Foundation	IN	90,437,187	5,939,717	12/31/2000
90.	The Baker Street Foundation	IN	88,226,572	5,529,000	12/31/2000
91.	The Crean Foundation	IN	86,752,364	2,329,830	12/31/2000
92.	Willametta K. Day Foundation	IN	86,509,421	4,607,660	12/31/2000
93.	The Kavli Foundation	IN	85,117,203	25,000	11/30/2001
94.	Cotsen Family Foundation, Inc.	IN	84,042,990	4,109,524	6/30/2001
95.	The Thomas J. Long Foundation	IN	83,995,711	4,582,300	12/31/2000
96.	Community Foundation Sonoma County	CM	83,264,190	6,506,959	12/31/2000

APPENDIX A: 100 Largest Foundations by Assets, Circa 2001 (cont.)

2001					
Rank	Name	Type	Assets	Total Giving	Fiscal Date
97.	Ted Mann Foundation	IN	83,108,909	4,155,000	11/30/2001
98.	Columbia Foundation	IN	80,355,102	3,398,521	5/31/2001
99.	A. Gary Anderson Family Foundation	IN	79,052,327	2,000,069	12/31/2000
100.	Orange County Community Foundation	CM	75,004,412	10,279,838	6/30/2001

Note: IN = Independent; CS = Corporate; CM = Community; OP = Operating

*Source: The Foundation Center. Based on the Guide to U.S. Foundations circa 2001, which includes all independent, corporate, community, and operating foundations making grants of at least one dollar during the relevant fiscal reporting period. Sources of data for these foundations include IRS information returns (Form 990-PF), foundation reports, and information reported to the Foundation Center on annual surveys of foundations with assets of at least \$100,000 or giving of \$50,000 or more. Assets are stated at market value. Total giving amount includes grants, scholarships, and employee matching gifts; it does not include all qualifying distributions, e.g., loans, PRIs, set-asides, and program or other administrative expenses.

APPENDIX B: 100 Largest Foundations by Total Giving, Circa 2001*

2001 Rank	Name	Type	Total Giving	Assets	Fiscal Date
1.	The David and Lucile Packard Foundation	IN	\$428,897,276	6,196,520,868	12/31/2001
2.	The California Endowment	IN	147,898,000	3,366,256,100	2/28/2002
3.	The William and Flora Hewlett Foundation	IN	119,955,933	6,080,721,309	12/31/2001
4.	Foundation for Deep Ecology	IN	103,567,575	63,661,523	6/30/2001
5.	Community Foundation Silicon Valley	CM	77,103,102	539,652,366	6/30/2002
6.	The San Francisco Foundation	CM	67,459,403	672,512,115	6/30/2002
7.	Peninsula Community Foundation	CM	63,233,274	478,503,157	12/31/2001
8.	The James Irvine Foundation	IN	59,017,797	1,378,433,649	12/31/2001
9.	W. M. Keck Foundation	IN	58,114,418	1,263,938,000	12/31/2001
10.	California Community Foundation	CM	56,551,166	535,945,270	6/30/2002
11.	Marin Community Foundation	CM	50,524,713	1,150,556,205	6/30/2001
12.	The California Wellness Foundation	IN	41,727,662	985,910,600	12/31/2001
13.	The Price Family Charitable Fund	IN	40,057,177	99,321,512	12/31/2001
14.	The San Diego Foundation	CM	39,161,583	401,264,000	6/30/2001
15.	Weingart Foundation	IN	36,004,253	675,303,638	6/30/2002
16.	Richard & Rhoda Goldman Fund	IN	32,540,477	431,931,333	12/31/2000
17.	The Milken Family Foundation	IN	31,577,251	271,650,942	11/30/2000
18.	The Ahmanson Foundation	IN	29,443,705	785,613,000	10/31/2001
19.	Morgridge Family Foundation	IN	27,802,108	117,133,491	12/31/2000
20.	Mary Stuart Rogers Foundation	IN	24,274,967	91,892,883	12/31/2000
21.	Arnold and Mabel Beckman Foundation	IN	22,399,144	400,843,343	8/31/2001
22.	Evelyn and Walter Haas, Jr. Fund	IN	21,790,730	488,632,860	12/31/2001
23.	The Wells Fargo Foundation	CS	21,321,223	279,334,009	12/31/2000
24.	The Lincy Foundation	IN	20,742,764	44,231,951	9/30/2001
25.	The Packard Humanities Institute	OP	20,655,346	1,302,804,659	12/31/2000
26.	J. Paul Getty Trust	OP	19,579,820	8,793,485,757	6/30/2001
27.	Stuart Foundation	IN	19,055,804	329,256,787	12/31/2001
28.	The Christensen Fund	IN	18,911,866	118,829,935	11/30/2001
29.	Koret Foundation	IN	16,799,871	315,112,125	12/31/2001
30.	The East Bay Community Foundation	CM	16,230,001	122,578,355	6/30/2001
31.	The Ralph M. Parsons Foundation	IN	16,000,512	323,106,101	12/31/2001
32.	Wayne & Gladys Valley Foundation	IN	15,712,982	588,367,987	9/30/2001
33.	Thomas and Dorothy Leavey Foundation	IN	15,643,429	267,729,622	12/31/2000
34.	Energy Foundation	IN	14,885,496	48,884,433	12/31/2000
35.	Waitt Family Foundation	IN	14,632,347	207,252,015	12/31/2000
36.	The David Geffen Foundation	IN	13,119,955	2,098,321	12/31/2000
37.	Dan Murphy Foundation	IN	12,681,511	245,329,729	12/31/2000
38.	Henry L. Guenther Foundation	IN	12,530,000	184,744,357	12/31/2000
39.	The Capital Group Companies Charitable Foundation	IN	12,525,082	67,484,835	6/30/2001
40.	Miriam and Peter Haas Fund	IN	12,482,542	265,612,590	12/31/2000
41.	Levi Strauss Foundation	CS	12,472,180	90,741,095	12/31/2001
42.	May and Stanley Smith Charitable Trust	IN	12,076,811	320,556,270	12/31/2000
43.	Chartwell Charitable Foundation	IN	11,315,150	2,543,950	12/31/2001
44.	Wasserman Foundation	IN	10,708,880	108,489,214	12/31/2000
45.	Vincent J. Coates Foundation	IN	10,529,500	20,715,461	12/31/2001
46.	Selim K. Zilkha Foundation	IN	10,405,356	13,206,868	9/30/2001
47.	Walter and Elise Haas Fund	IN	10,390,205	233,139,808	12/31/2000

APPENDIX B: 100 Largest Foundations by Total Giving, Circa 2001 (cont.)

2001 Rank	Name	Type	Total Giving	Assets	Fiscal Date
48.	H. N. & Frances C. Berger Foundation	IN	10,378,667	403,833,632	12/31/2000
49.	Orange County Community Foundation	CM	10,279,838	75,004,412	6/30/2001
50.	Hammer International Foundation	IN	10,092,509	20,944,517	12/31/2000
51.	The Donald & Joan Beall Foundation	IN	9,757,387	2,969,064	10/31/2001
52.	Bernard Osher Foundation	IN	9,634,848	69,007,511	12/31/2000
53.	D&DF Foundation	IN	9,503,289	114,884,462	6/30/2000
54.	The McConnell Foundation	IN	9,421,205	370,112,590	12/31/2000
55.	The Kenneth T. and Eileen L. Norris Foundation	IN	9,121,291	179,549,907	11/30/2001
56.	The Ann and Gordon Getty Foundation	IN	8,828,400	8,995,217	12/31/2000
57.	Open Doors International, Inc.	OP	8,665,007	5,407,743	12/31/2000
58.	S. H. Cowell Foundation	IN	8,547,471	176,802,653	12/31/2000
59.	The Walt and Lilly Disney Foundation	IN	8,444,000	203,041,343	12/31/2000
60.	Compton Foundation, Inc.	IN	8,396,884	102,015,741	12/31/2000
61.	Pasadena Area Residential Aid-A Corporation	IN	8,360,933	6,524,231	7/31/2001
62.	Colburn Music Fund	IN	8,129,076	255,778,690	6/30/2002
63.	Fritz B. Burns Foundation	IN	7,947,000	152,014,451	9/30/2001
64.	Charles and Helen Schwab Foundation	IN	7,854,900	344,542,135	6/30/2000
65.	The Barbara Delano Foundation, Inc.	IN	7,658,255	39,558,107	12/31/2000
66.	The Noyce Foundation	IN	7,538,580	167,335,397	12/31/2001
67.	Carrie Estelle Doheny Foundation	IN	7,282,719	173,440,311	12/31/2001
68.	Cisco Systems Foundation	CS	7,187,424	125,001,798	7/31/2001
69.	Colburn Foundation	IN	7,179,500	149,449,064	12/31/2001
70.	The Times Mirror Foundation	CS	7,164,630	6,452,561	12/31/2000
71.	El Adobe Corporation	IN	7,160,505	48,083,411	8/31/2001
72.	The Fletcher Jones Foundation	IN	7,124,165	148,310,494	12/31/2001
73.	Tenet Healthcare Foundation	CS	7,077,454	57,301,248	5/31/2001
74.	The Eisner Foundation, Inc.	IN	7,000,000	128,560,000	12/31/2001
75.	S. Mark Taper Foundation	IN	6,747,720	126,356,043	12/31/2001
76.	Sacramento Regional Foundation	CM	6,605,705	36,226,140	12/31/2001
77.	Community Foundation Sonoma County	CM	6,506,959	83,264,190	12/31/2000
78.	Moore Family Foundation	IN	6,375,453	42,969,876	9/30/2001
79.	Community Technology Foundation of California	CM	6,217,500	12,230,171	12/31/2000
80.	The William G. Irwin Charity Foundation	IN	6,093,650	123,373,665	12/31/2000
81.	Jacobs Family Foundation, Inc.	IN	5,955,547	21,916,116	12/31/2000
82.	Pfaffinger Foundation	IN	5,939,717	90,437,187	12/31/2000
83.	The Gap Foundation	CS	5,851,892	10,993,336	1/31/2002
84.	Lakeside Foundation	IN	5,687,740	114,041,314	12/31/2000
85.	The Koshland Foundation	IN	5,618,781	30,767,640	7/31/2001
86.	The Homeland Foundation	IN	5,581,520	30,284,340	12/31/2000
87.	The Baker Street Foundation	IN	5,529,000	88,226,572	12/31/2000
88.	Archstone Foundation	IN	5,506,946	122,198,875	6/30/2001
89.	Lund Foundation	IN	5,499,950	97,351,715	12/31/2001
90.	UniHealth Foundation	IN	5,486,255	254,479,474	9/30/2001
91.	L. K. Whittier Foundation	IN	5,482,000	109,398,031	4/30/2001
92.	The Grousbeck Family Foundation	IN	5,388,684	109,459,951	11/30/2000
93.	Jaquelin Hume Foundation	IN	5,385,548	25,579,632	12/31/2001
94.	Elizabeth and Stephen Bechtel, Jr. Foundation	IN	5,352,500	93,949,560	12/31/2001
95.	Joseph Drown Foundation	IN	5,290,671	92,370,042	3/31/2001
96.	Santa Barbara Foundation	CM	5,255,624	183,769,046	12/31/2001

APPENDIX B: 100 Largest Foundations by Total Giving, Circa 2001 (cont.)

2001

Rank	Name	Type	Total Giving	Assets	Fiscal Date
97.	The Walt Disney Company Foundation	CS	5,247,749	2,935,862	9/30/2000
98.	Flora Family Foundation	IN	5,160,515	103,770,309	12/31/2001
99.	William K. Bowes, Jr. Foundation	IN	5,061,780	133,110,273	12/31/2000
100.	The Norton Simon Foundation	IN	5,000,500	502,085,266	12/31/2000

Note: IN = Independent; CS = Corporate; CM = Community; OP = Operating

*Source: The Foundation Center. Based on the Guide to U.S. Foundations circa 2001, which includes all independent, corporate, community, and operating foundations making grants of at least one dollar during the relevant fiscal reporting period. Sources of data for these foundations include IRS information returns (Form 990-PF), foundation reports, and information reported to the Foundation Center on annual surveys of foundations with assets of at least \$100,000 or giving of \$50,000 or more. Assets are stated at market value. Total giving amount includes grants, scholarships, and employee matching gifts; it does not include all qualifying distributions, e.g., loans, PRIs, set-asides, and program or other administrative expenses.